



Vernham Grove,

Offers In Excess Of £340,000

FOR SALE

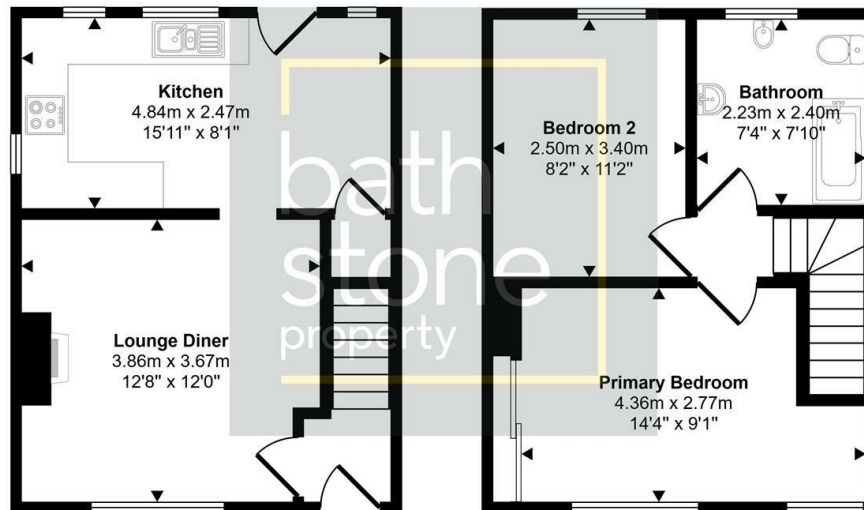


- End-Terrace
- Lounge Diner
- Loft is Partially Boarded
- Planning Permission for Loft Conversion and Kitchen Extension
- Two Bedrooms
- Spacious
- Double Garage and Driveway
- Recently Refurbished

THE PROPERTY

This end terrace house in Vernham Grove is a fantastic opportunity for those looking to settle in Bath. With its spacious interiors, convenient parking, and generous garden, it presents a wonderful chance to create a comfortable and inviting home.

Approx Gross Internal Area
60 sq m / 651 sq ft



This floorplan is only for illustrative purposes and is not to scale. Measurements of rooms, doors, windows, and any items are approximate and no responsibility is taken for any error, omission or mis-statement. Icons of items such as bathroom suites are representations only and may not look like the real items. Made with Made Snappy 360.



Energy Efficiency Rating

	Current	Potential
Very energy efficient - lower running costs		
(92 plus) A		
(81-91) B		
(69-80) C		
(55-68) D		
(39-54) E		
(21-38) F		
(1-20) G		
Not energy efficient - higher running costs		
	68	74
England & Wales	EU Directive 2002/91/EC	